

# LOCOSYS GW-60

## Quick Start Guide



**Alarm status**



**Blinking:** searching for GPS

**Steady on:** GPS is ready



**Battery level**



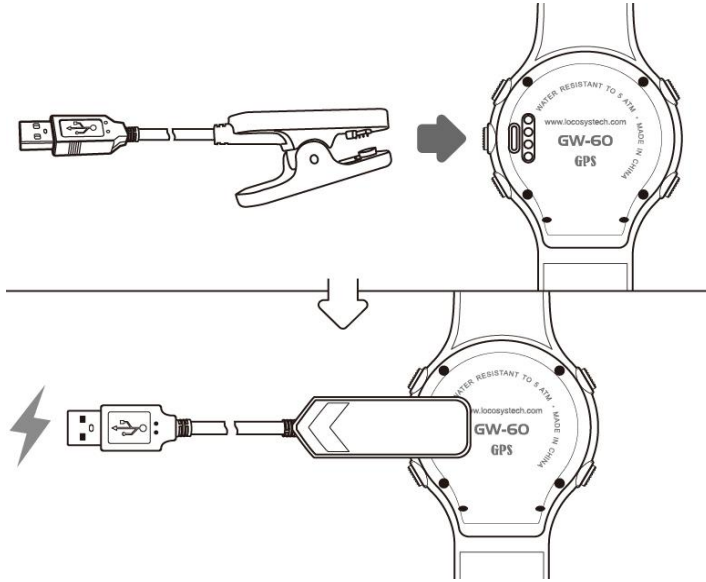
**Charging**



**Full charge**

# Section 1. Brief Introduction

- 1.1** Before operating your GW-60, clip the device and full-charge it with DC +5V/500mA charger for at least 3~4 hours.



- 1.2** Press **MODE/BACK** to select Time modes  
(1) CLOCK; (2) ALARM; (3) STOPWATCH; (4) TIMER



- 1.3** Press **ADJUST/** to setting page.



**1.4** Press **GPS** to GPS mode. GPS signal will be searched automatically.



**1.5** Backlight: Hold **MODE/BACK** for 2 sec.  
(Press any key to extend backlight time)



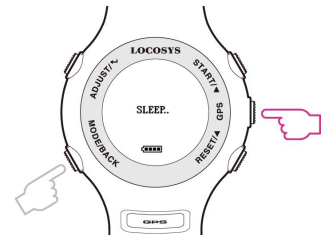
**1.6** Lock screen: **START+MODE**, press again to unlock.



**1.7** Sleep mode: Hold **GPS** for 1 sec to sleep mode.

At clock mode, GW-60 will turn to sleep mode in 15sec.

**Tip:** Press **MODE/BACK** to wake up the watch.



# Section 2. Time Mode

## 2.1 Clock Mode

Display local time based on the GMT setting.

**Tip:** Quick clock time setup for first time usage.

(1) GMT Setting: Refer to 3.6

(2) GPS Time Synchronization: Under open sky environment, switch to **GPS** mode and wait until the GPS fixed. GW-60 will automatically synchronize to precise GPS UTC time.



## 2.2 Alarm Mode

### Alarm Mode

- Press **ADJUST**/**←** to adjust alarm time.
- Press **▲** / **▼** button to select numbers and **ADJUST** / **BACK** to start/end adjustment.



## 2.3 Stopwatch Mode

### Stopwatch Mode

- Press **START** to start counting time and press again to pause.
- Press **RESET** to reset counting time to "00:00.00".
- Press **MODE/BACK** to exit.



## 2.4 Timer Mode

### Timer Mode

- Press **ADJUST** to start adjusting timer.
- Press **▲** / **▼** to change numbers and **MODE/BACK** button to end adjustment.
- Press **START** to start counting down and press again to pause.
- Press **RESET** to restart timer



# Section 3. Setting

## 3.1 Setting page:

**ADJUST/←**: Enter edit mode/ Confirm.

▲: Up.

▼: Down.

**MODE/BACK**: Exit edit mode/ Cancel.



## 3.2 BUZZER: set buzzer/ sound.

O : On/ Enable.

X : Off/ Disable.



## 3.3 LOGGING: Log rate setting.

OFF : No logging.

1HZ : When speed over [MIN SPEED], log rate in 1Hz.

5HZ : When speed over [MIN SPEED], log rate in 5Hz.

SMART:

[MIN SPEED] ≤ Speed < [SPD GENIE] : 1Hz log rate.

[SPD GENIE] ≤ Speed : 5Hz log rate.



## 3.4 MIN SPEED: Speed threshold, only logged speed above

[MIN SPEED].

Available number: 0 to 15 [UNIT].

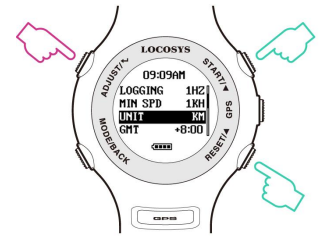


**3.5 UNIT:** Speed measurement unit.

KM : Kilometer.

MI : Mile.

NM : Nautical mile.



**3.6 GMT:** Set GMT/Time zone, e.g. +8:00 for Taipei.

Available number: GMT-12:00 to GMT+13:00.



**3.7 SPEED AVG:** Time interval for speed averaging.

Available number: 1 sec to 60 sec.



**3.8 SPD GENIE:** Auto-speed report, setting the minimum speed threshold to initiate [SPD GENIE].

Available number: 0 to 63 [UNIT].



**3.9 ACTION SPEED:** Speed display type

SPEED : Current speed (200ms average)

NS AVG : N-second average speed based on [SPEED AVG].



**3.10 SPD FONT:** Speed display font for Speed report.

SMALL : Small font.

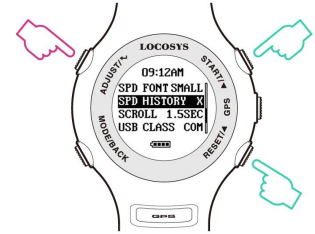
BIG : Big font.



**3.11 SPEED HISTORY:** Display speed history record in speed report.

O : On/ Enable.

X : Off/ Disable.



**3.12 SCROLL SECOND:** Set scroll second in speed report

Available number: 1 sec to 2.5 sec.



**3.13 USB CLASS:** Connection type

COM: Virtual COM PORT for Windows platform user.

UMS: USB Mass Storage for non-Windows platform user.

(Note: Set UMS before entering "MSC mode" on 3.14)



### 3.14 TO USB MSC: Connection by Mass Storage Class (MSC)

mode mainly for non-Windows platform user.

#### Tip: How to get GPS data in USB MSC mode

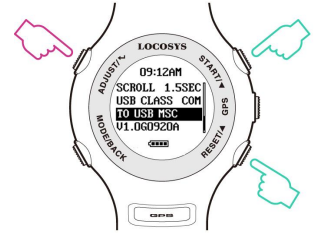
(1) Set “USB CLASS” option to “UMS” first.

(Note: Before setting, the USB charging cable MUST be disconnected.)

(2) Connect to USB, and press **ADJUST/←** “TO USB MSC” to enter USB MSC state.

(3) Find a new flash drive with a READ only file—  
GPSLOG.SBP on your host PC.

(4) Remove USB cable to exit.



### 3.15 FIRMWARE VERSION: check device status

Firmware Version: VX.XXXXXX

User Name: XXXXXX

Serial Number: SXXXXXXXX

GPS Version: XXXX





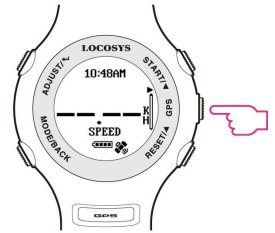
# Section 4. GPS Mode

**4.1 Action Speed:** Display current instant speed or N-sec. average speed.

- **Vertical Bar:** Log memory usage.
- **Horizontal Bar:** Speed accuracy indicator.

(Long bar means good signal)

- **Symbol ■** :Not logging data
- **Symbol ►**: logging data
- Press ▲ / ▼ to move on next page “Top 10 Speeds”, “Top 10 AVG Speeds” and “PVT” .



GPS searching



GPS fixed

**4.2 Auto Speed Report:** If [SPD GENIE] is enabled, the auto speed report screen shows at the end of each session.

e.g. MAX SPEED: 61.65 KH

N-SEC SPEED: 50.57 KH

(Medal icon: New record achieved.)

When in Big Font mode, 3 screens are displayed one after another

MAX SPEED

N-SEC SPEED

SPEED HISTORY (If *SPEED HISTORY* turns on)



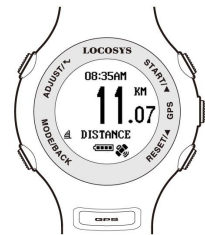
Small Font



Big Font

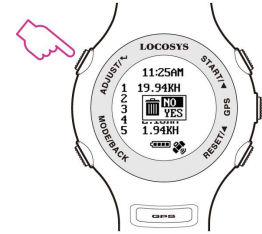
**4.3 Distance Traveled:** Display distance traveled when data logging.

- Press ▲ / ▼ to next page/ previous page.



#### 4.4 Top 10 Max Speeds: Display Top 10 max speed record.

- Press ▲ / ▼ to next page/ previous page.
- Press **MODE/BACK** to scroll page.
- Press **ADJUST/↵** to delete records.



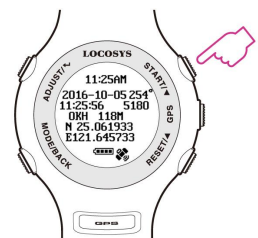
#### 4.5 Top 10 AVG Speeds: Display Top 10 average speed records.

- Press ▲ / ▼ to next page/ previous page.
- Press **MODE/BACK** to scroll page.
- Press **ADJUST/↵** to delete records.



#### 4.6 PVT: Display position, velocity, and time

- Press ▲ / ▼ to next page/ previous page.



## Section 5. GW-60 PC Utility (Windows platform only)

### 5.1 Device connection procedure : (Make sure USB driver is installed)

(1) Select COM port properly.

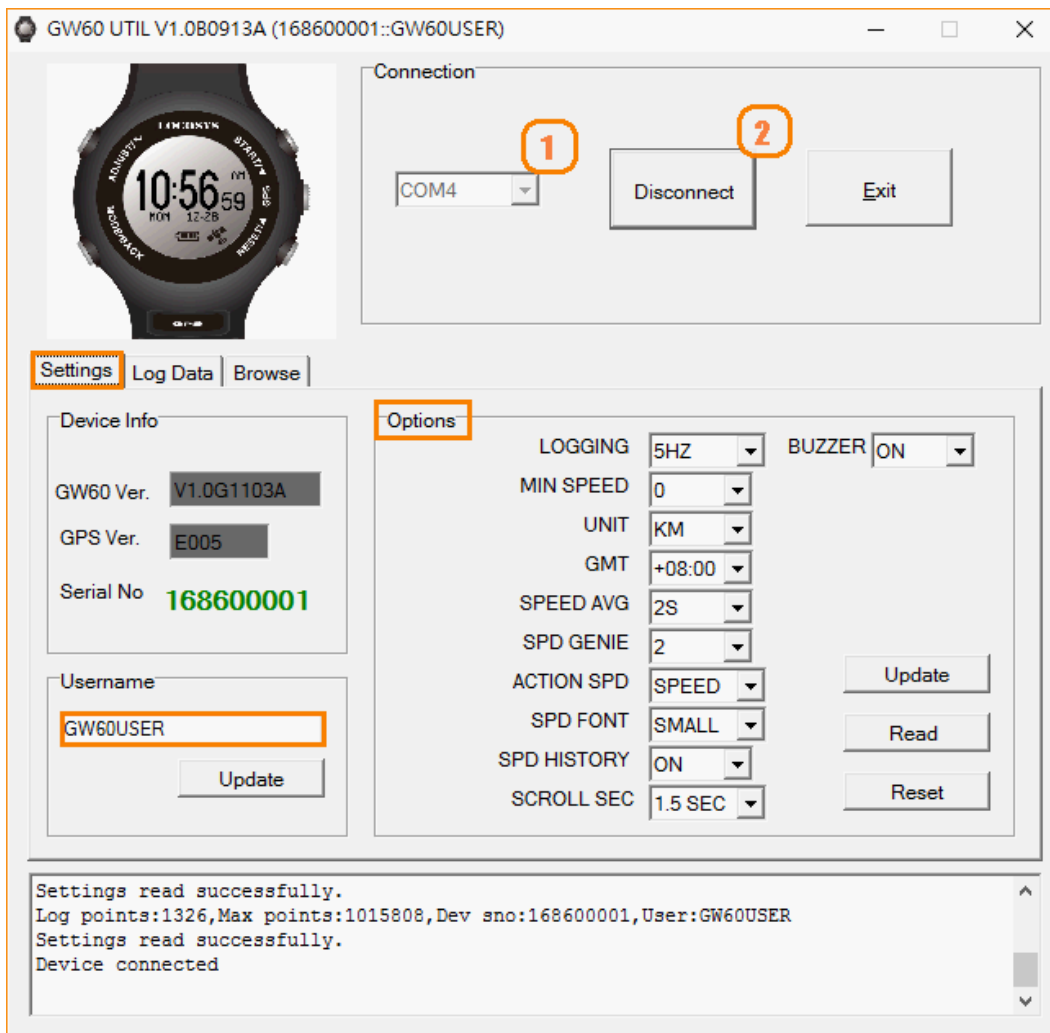
(2) Click “Connect” to connect device.

Once the device is connected, the firmware version will be displayed.

(Note: click **②** “Disconnect” before unplugging the USB cable.)

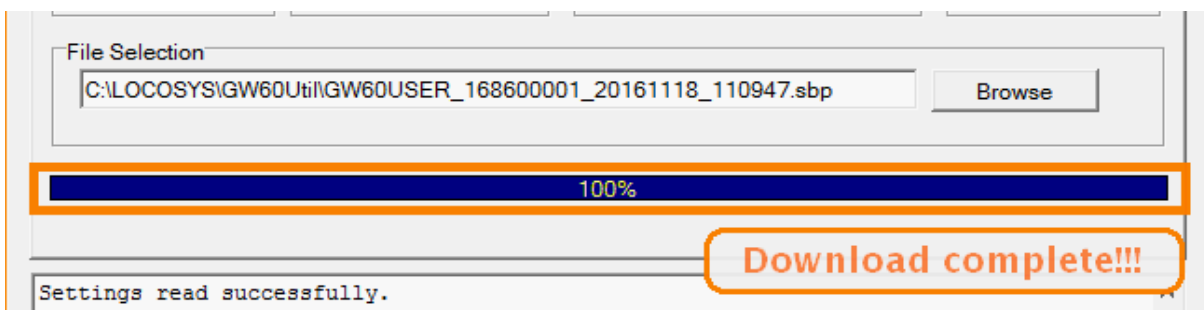
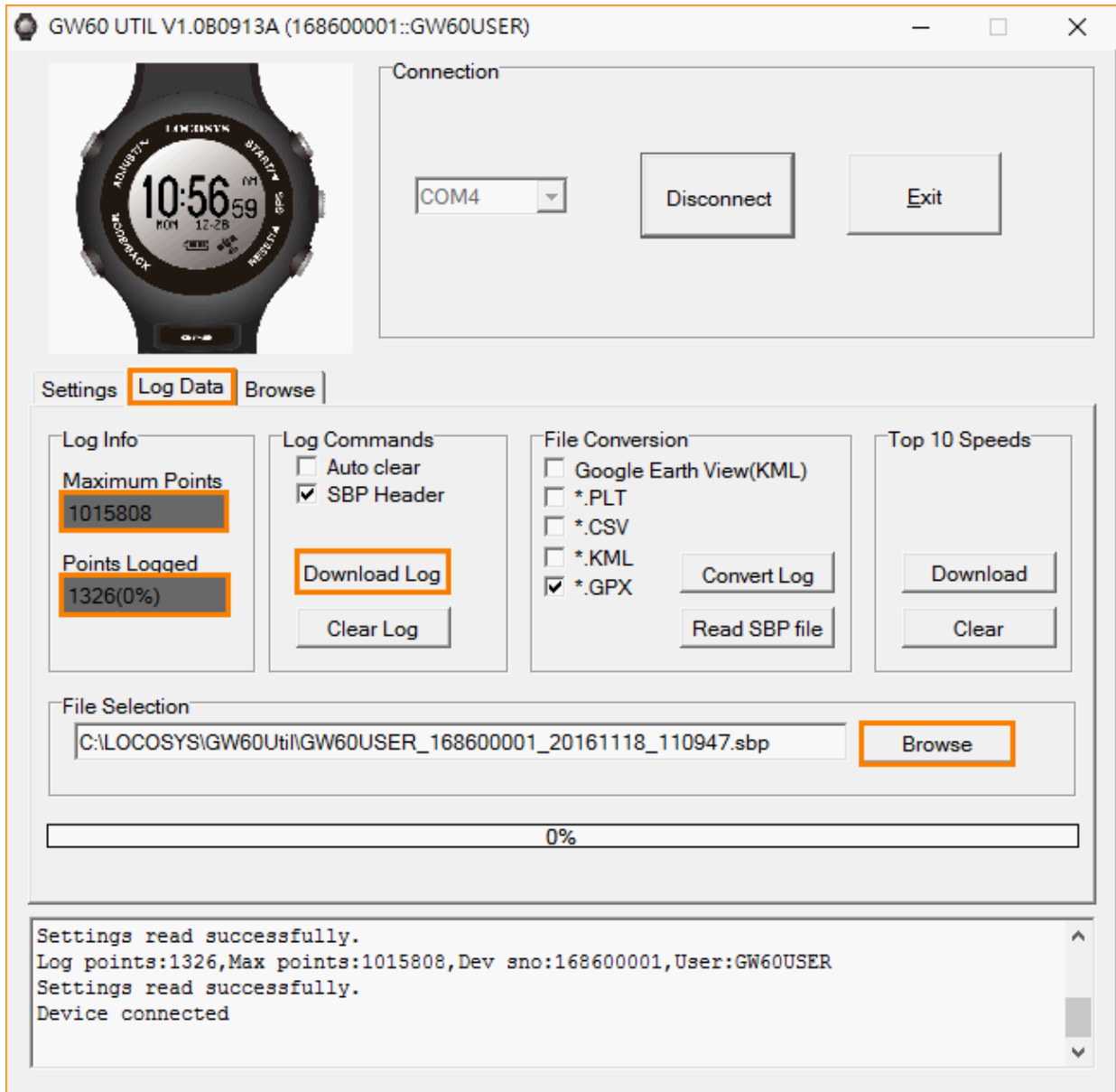
### 5.2 Click “Settings” to select setting function page.

In setting function page, users can change username, UTC offset, log interval….

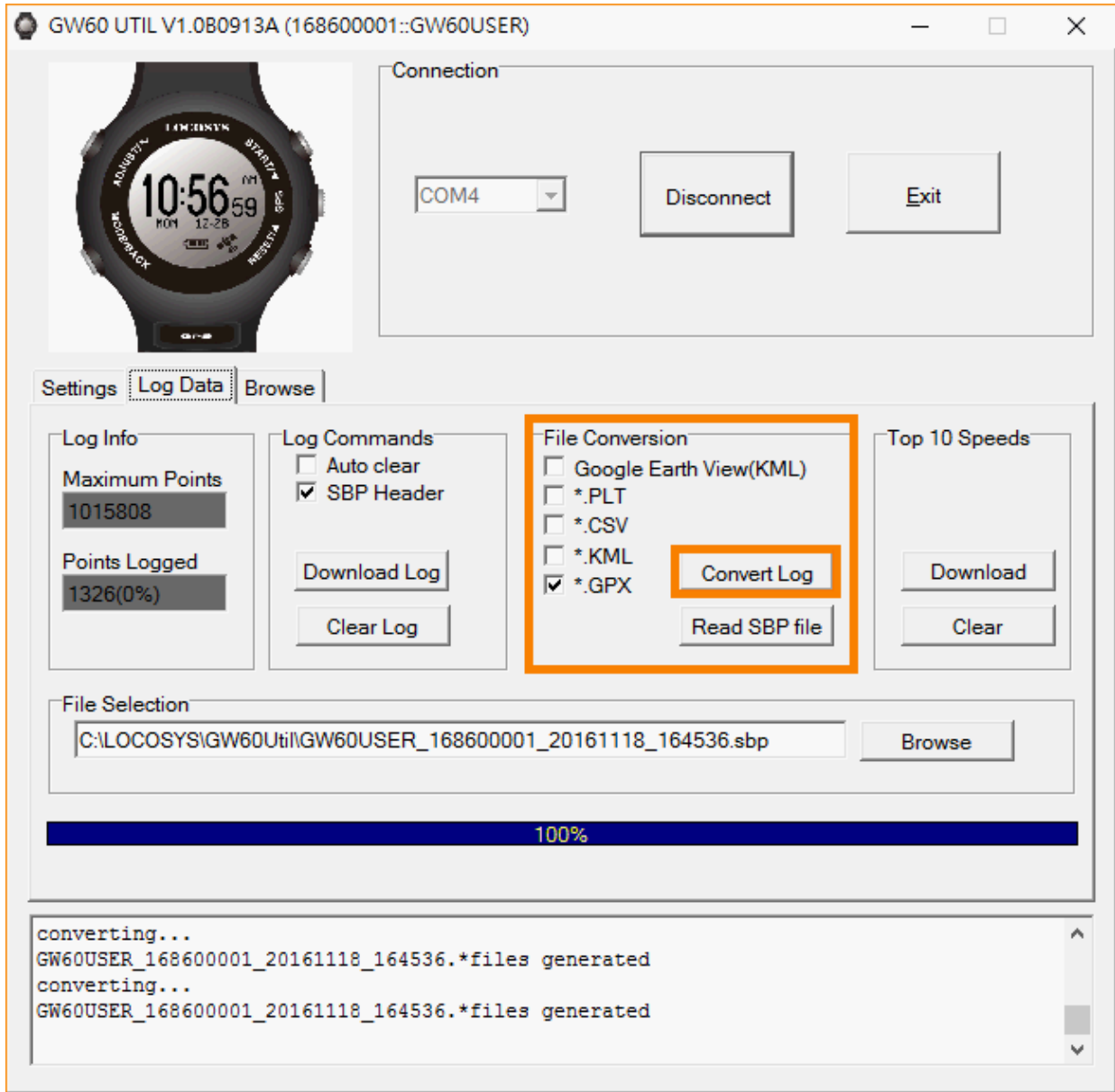


**5.3** Click “Log Data” to select log function page.

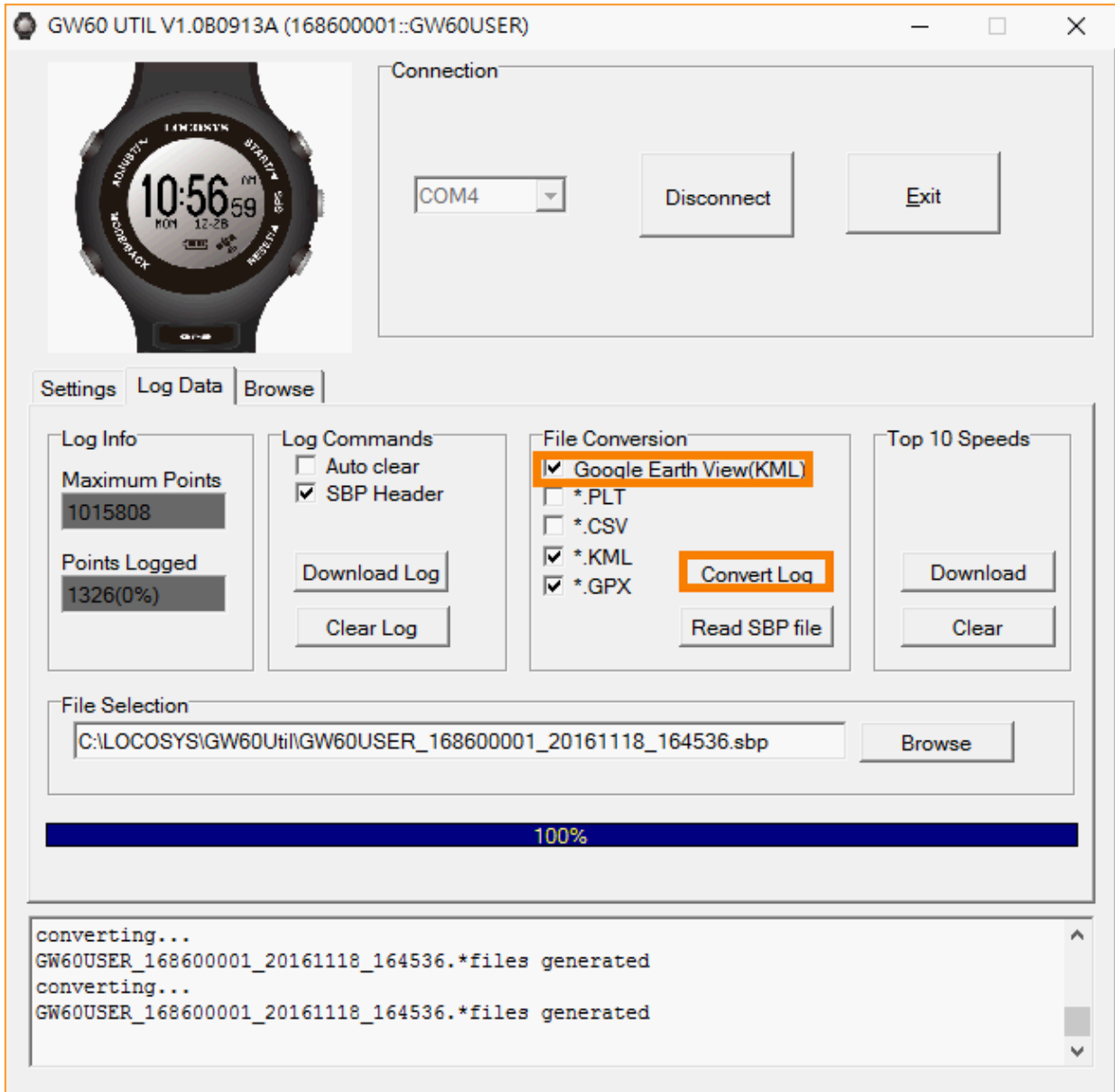
In this page, users can see “Log Info” , and be able to download log data (in SBP format).



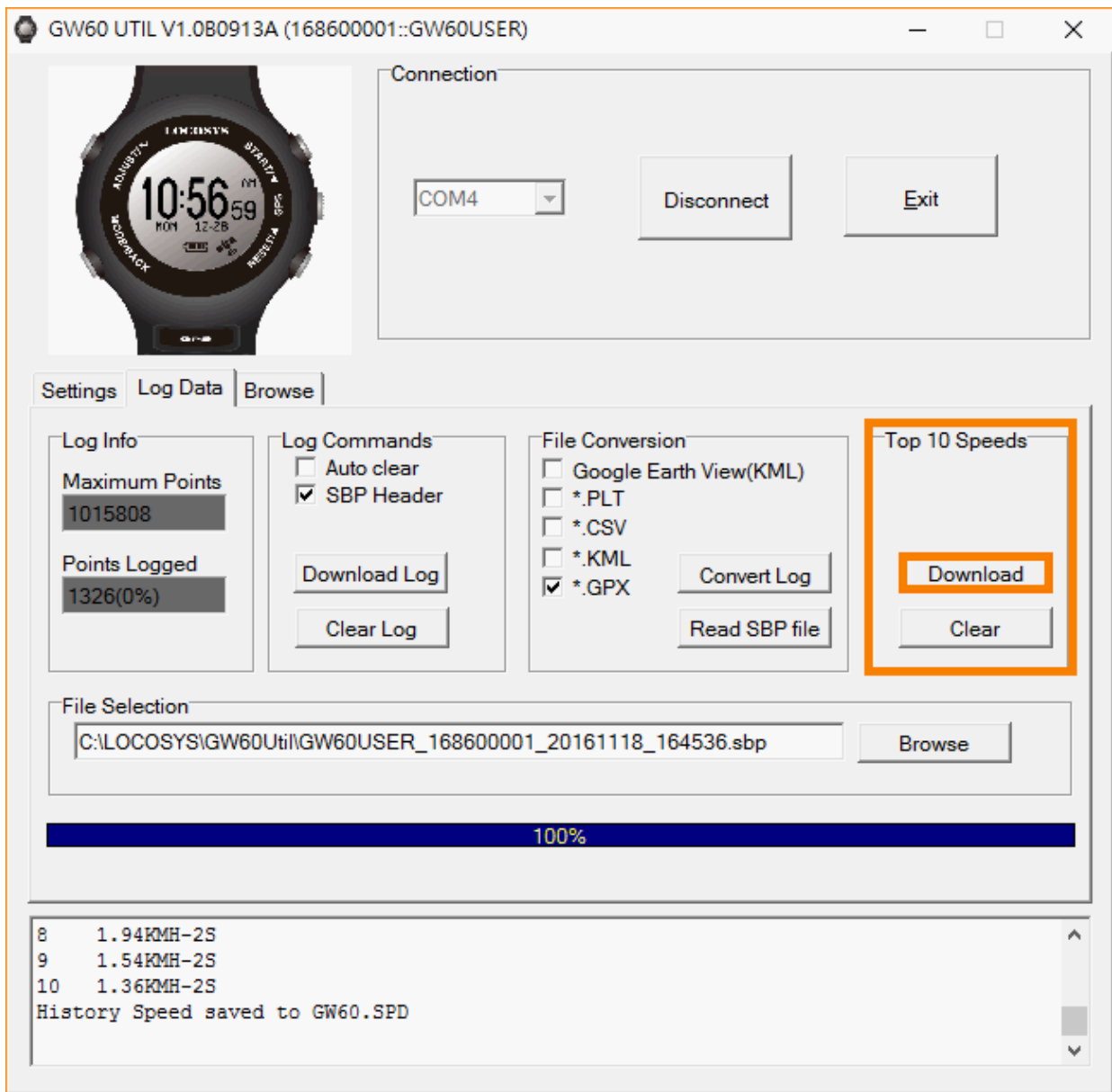
- 5.4** Click "Convert Log" to convert the SBP file into PLT, CSV, KML and GPX files.  
(Check [✓] Google Earth View to see the travel trajectory)



5.5 Click “Google Earth View” to link with Google Earth Viewer.



**5.6** Click “Download” to download the TOP 10 Speeds in SBP file.





5.7 Click “Browse” to view logged data.

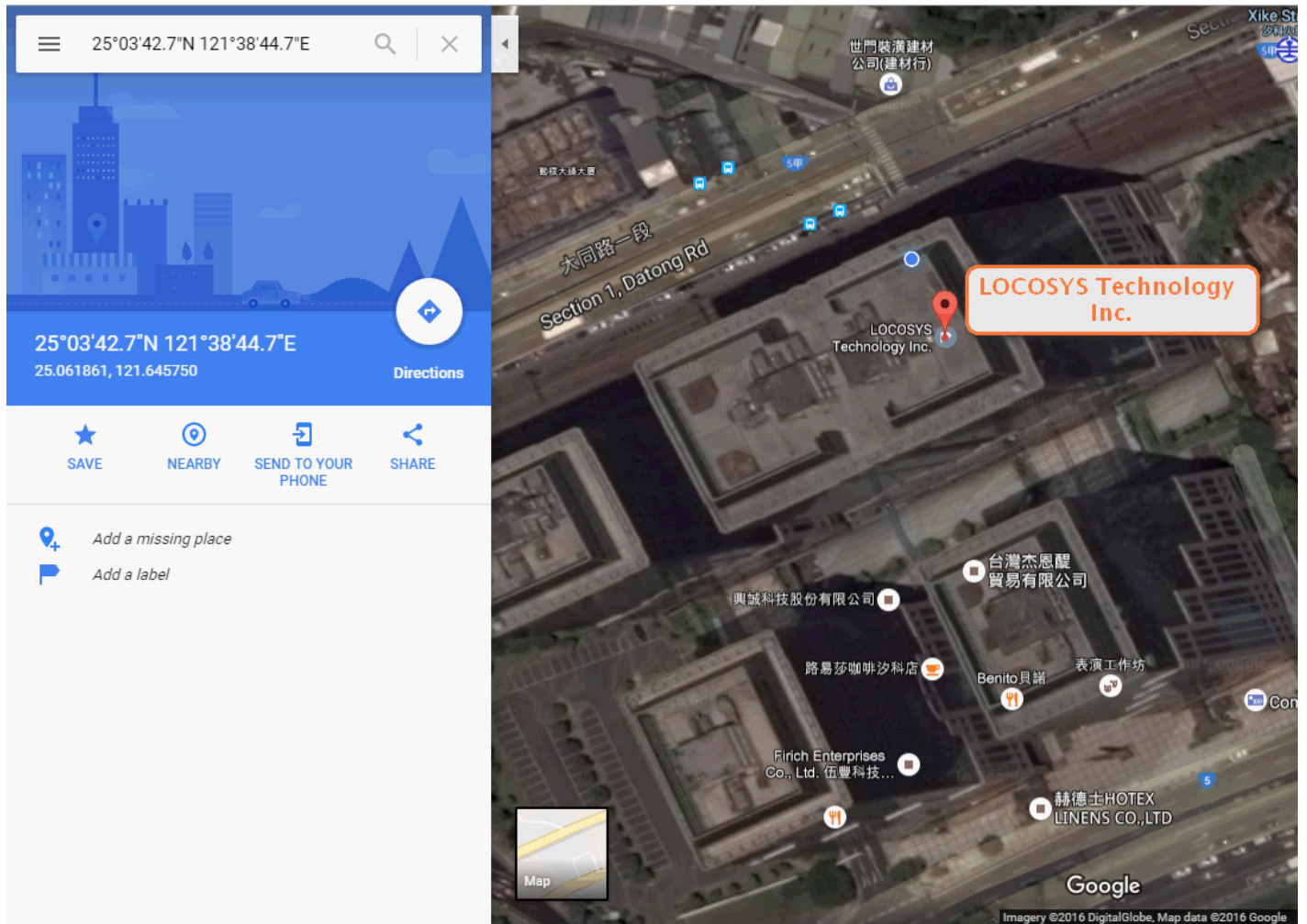
Click item number to link up Google Map.

The screenshot shows the GW60 UTIL V1.0B0913A (168600001::GW60USER) window. It features a digital watch image on the left and a 'Connection' panel with a dropdown menu set to 'COM4' and 'Disconnect' and 'Exit' buttons. Below this is a tabbed interface with 'Settings', 'Log Data', and 'Browse' tabs. The 'Browse' tab is active, displaying a table of logged data. An orange box highlights the 'Browse' tab, and another orange box highlights row 7 of the table. An orange arrow points from a callout box to row 7. The callout box contains the text 'Double click to link up Google Map'. At the bottom of the window, there is a 'History Speed' section showing speed data for items 8, 9, and 10, and a note that the history has been saved to GW60.SPD.

SBP-W2	HDOF	SVID#	Msec	UTC	SVID	Lat	Lon	Alt	SOG
1	1.2	6	6510	2016-11-18 02:04:00	0005	250612961	1216458000	10820	96 c
2	1.2	6	6706	2016-11-18 02:04:00	0005	250613049	1216457957	10850	134 c
3	1.2	6	6901	2016-11-18 02:04:00	0005	250613133	1216457892	10911	165 c
4	1.2	6	7099	2016-11-18 02:04:00	0005	250613187	1216457875	10911	166 c
5	1.2	6	7297	2016-11-18 02:04:00	0005	250613246	1216457847	10942	143 c
6	1.2	6	7496	2016-11-18 02:04:00	0005	250613297	1216457821	10942	134 c
7	1.2	6	7694	2016-11-18 02:04:00	0005	250613335	1216457800	10911	170 c
8	1.2	6	7892	2016-11-18 02:04:00	0005	250613389	1216457755	10942	200 c
9	1.2	6	8090	2016-11-18 02:04:00	0005	250613457	1216457701	10972	204 c

8 1.94KMH-2S  
9 1.54KMH-2S  
10 1.36KMH-2S  
History Speed saved to GW60.SPD

- 5.8** Click the SBP record in the browse page to view the point on Google Map.  
Or, to view the converted GPX and KML files on Google Earth.



## Section 6. Maintenance & Support service

All GW-60 go through inspections before users have it. In this section, we will explain how to prevent the malfunctions, and how to care for the watch.

1. Do not operate buttons under water.
2. Do not operate the device in extreme temperatures.
3. After using the device, wash it lightly in tap water and wipe all moisture with a dry cloth, and allow it air dry.
4. Do not clean the device with spray cleaners, alcohol, thinners, gasoline, organic solvents, aerosol sprays and paint.
5. Do not drop the device or any abuse treatments.
6. If the consumption parts (e.g. panel, buttons, strap, free loops, buckles, and seals) are damaged by misuse, hit, scratch, and affect the normal operation on GW-60. Contacting your local LOCOSYS-authorized dealer for a repair service. The repair will hold a charge, and price depends on the inspections. The dealer will provide a quote and help you return the watch to LOCOSYS. LOCOSYS will view the condition and advise dealer the repair assessment.

*(Note: Before repairing your GW-60, LOCOSYS will charge the inspection fee in advance.)*

7. Do not try to open the device, or it may cause your watch lose waterproof capability.
8. If the device hasn't been used for a long time or months, do not forget to charge your watch periodically for maintaining the battery lifetime.
9. To download the latest firmware version for GW-60, visit our website for "Download page" [www.locosystech.com](http://www.locosystech.com)

## Section 7. Warranty & Return Information

### ◆ Warranty Coverage

1. GW-60 is warranted for 12 months and warranty coverage is effective from the date of purchases. *(Note: Some areas may extend to 24 months)*
2. LOCOSYS warrants our products and its parts against defects in material and workmanship under normal use within the warranty period.
3. The warranty does not cover any product where damage has been caused by accident, abuse, misuse, natural disaster, any unauthorized disassembles, or modification.  
*(Note: LOCOSYS will repair it for free, and customers will pay the inbound shipping cost.)*
4. For warranty returns, the product "MUST" be returned by LOCOSYS authorized dealers.
5. Before shipping a returned product to LOCOSYS, dealers shall inform LOCOSYS and apply the RMA (Return Merchandise Authorization) request form.

### ◆ Out-of-Warranty Service

1. Out-of-warranty products, or damage condition not be covered under the warranty will be charged to the customer. If the product fails forgoing conditions, we can usually repair it for a very reasonable price. We'll provide a quote including shipping charge for repair. *(Note: Repairs will be performed upon the receipt of payment.)*
2. Customers will prepay for shipping both ways, plus parts and labor.

◆ **Where to get help**

1. *Local dealers support*

Contact the LOCOSYS-authorized dealers to reach a support service, or repair service to return the damaged device to LOCOSYS.

2. *Website support*

Visit LOCOSYS website [www.locosystech.com](http://www.locosystech.com) for firmware update, and trouble-shooting information. You can e-mail LOCOSYS to get tips, usage information, and FAQs, download utilities.

*Enjoy your ride!!*